

Geargrinders News

June 2025

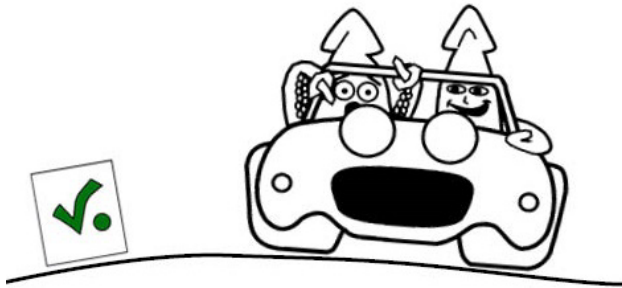


June 7 Saturday Series Rally

Rallymasters Russ and Katy Kraushaar have a great June Rally lined up, starting at Milwaukie Lowe's and traveling to Ridgefield, Washington. You will be fortunate to include this one in your early summer plans. Don't miss this providential chance for fun and success at the game that takes you places, if you're lucky.

About the rally

This rally's title, **Lucky #41**, does imply some happenstance or chance may determine outcomes.



Despite the familiar squid-theme, there is some mystery surrounding the event. We know the rallymasters are long-time rallyists and have written many great TSD rallies. Chances are better than 50:50 that this will be another.

For updates: <https://www.cascadegeargrinders.org>

Registration

Entry team includes a street-legal vehicle, licensed and insured driver, navigator, and a smart device (cell phone or tablet) running the Competitor Richta GPS Checkpoints app (app is free).

Entry fee is \$25 per team for CSCC members
\$35 per team for non-members

Register by **midnight June 4:**

<http://msreg.com/CSCC25JuneRally>

Schedule

June 6, Friday

Zoom Rally Q&A meeting 7 pm

June 7, Saturday

First team starts 10:01 am

First team finishes approx. 1:30 pm

Prizes awarded soon after all teams finish

60th Anniversary Mountains to the Sea Rally Results

Cascade Sports Car Club's 60th anniversary Mountains to the Sea Rally is in the history books. Twenty-three teams entered and eighteen teams ran the rally on May 10. The 180-mile route took about seven hours to complete. A ferry crossing and a Monte Carlo finish at the Rogue Brewers on the Bay in Newport were highlights.

The route was easy to follow, with mileage on every numbered route instruction. Speeds were set below legal speed limits. and pauses were provided where needed.

For each of the 34 scored legs, penalty points were earned for being early or late, one point per second, up to a maximum of 60 points. Being more than a minute early or late earned 60 points. Being exactly on time is a score of zero. Knowing this helps put the winning scores into sharp focus. First overall finished with a total error of 13 seconds over a seven-hour rally.

Leveling the Playing Field

Although there were no navigational challenges on this rally, the event was not without challenges. As mentioned, every numbered route instruction included a mileage identifying exactly where that instruction is to be executed. Using that information, along with the speeds and pauses specified in the route instructions, a



Geargrinders News (continued)

rallyist can calculate exactly what time they should execute each instruction. In other words, they can pre-calculate the rally before they run it. Then as they drive the route, they just make sure they hit the time hacks.

To blunt that advantage somewhat, the rally rules included some speed changes that did not appear in the route instructions. The speed changes were triggered by speed control signs along the rally route which could not be anticipated (calculated) in advance.

The rally rules included the following Automatic Route Instruction:

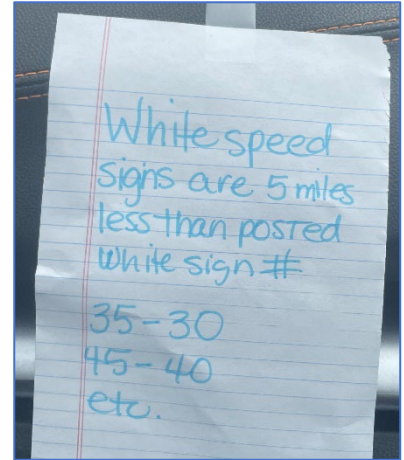
CAST the posted legal speed limit minus 5 mph at "SPEED".
Ignore presence or absence of "LIMIT".

In addition to the speed changes that occurred in the Numbered Route Instructions, each time you passed a speed control sign you were to change your speed to 5 mph less than the posted speed.

Another slight timing impact was included in the glossary of the rally rules. The term LOOK when used in a route instruction was defined to mean: Direct attention briefly in the indicated direction and PAUSE 10 seconds. For example, the route instruction:

OM 7.40 NIR 49. LOOK right (Crimson Clover)

Means that at Official Mileage 7.40, Numbered Route Instruction 49 directed you to look briefly in the indicated direction (right in this case) and pause 10 seconds. Those who read the rules for this rally noted this new defined term and paused at each of the five LOOK instructions. Missing all five added 50 points to your total score.



Helpful reminder of automatic speed change rule taped to dashboard

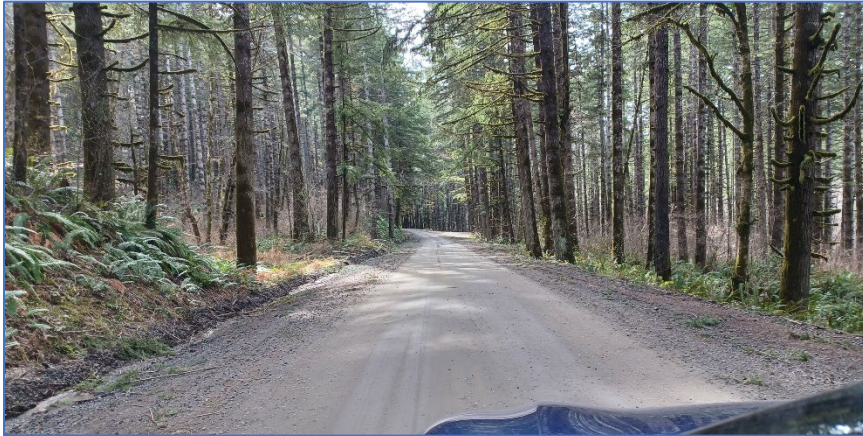


Rally Development

Rallymasters Monte and Victoria Saager started thinking about this rally route almost as soon as the 59th Mountains to the Sea was put to bed. We had some ideas about the 60th anniversary of this event. We knew we wanted to end in or near Newport. We wanted to consider including some gravel roads. A ferry crossing was on our list. And we wanted an indoor, civilized ending location, out of the rain and wind of the open beach. So...

Geargrinders News (continued)

Gravel or no gravel? A few years ago, we made the decision to use only paved roads for Cascade's rally program, thinking that folks who want to take their nice cars on a rally for the first time probably don't want to drive on



gravel. However, there are folks who don't mind (perhaps even enjoy) the challenge of unpaved surfaces, if they know about it ahead of time so they can make the best choice of vehicle.

Part of our preferred route included gravel roads. Should we or should we not include them in the rally?

We did, and the feedback from rallyists was minimal, no complaints. Huh. There were a couple rough

spots, but mostly the unpaved road surfaces were smooth.

Will the ferry be open? The Buena Vista Ferry was closed a few times while we were working on the route. On those occasions we drove the 20-mile one-hour detour to regain the route on the other side of the river. We worried that a spring storm might raise the water level enough to close the ferry on rally day.

Luckily the weather remained calm and the ferry stayed open for the checkout the week before and on rally day.

But what about the trophy dance around the beach fire? Put bluntly, the whole beach fire thing is an activity best organized by much younger organizers. Your current rally chairs prefer the comfort of a restaurant to being out in beach weather.



The Rogue Brewers on the Bay Restaurant was a fine ending location. The room overlooked the marina on Yaquina Bay directly under the iconic bridge. The highlight of the gathering was RDale Kraushaar's reminiscence of his running of the first Mountains to the Sea Rally 60 years ago and several after that in the early years. We were honored that RDale chose to come out of TSD rally retirement to run the 60th anniversary of the rally.





(left to right) RDale Kraushaar, Paul Eklund, Yulia Smolyansky, Sheldon Coles

Congratulate the top finishers

**1st overall and 1st Equipped --
Sheldon Coles and Yulia Smolyansky**

**2nd overall and 2nd Equipped --
Paul Eklund and RDale Kraushaar**

**3rd overall and 3rd Equipped --
Bob Morseburg and Cheri Eddy**

Other top finishers in their class:

1st SOP --David and JoAnn Gattman

2nd SOP --Marcus and Kerrie Gattman

3rd SOP --Alex Castaneda and Eric Hanson

1st Novice --Steven and Courtney Tellman

2nd Novice --Renee Loreen and Chelsea Funk

3rd Novice --Bill Kaplan and Judy Kraut



Team pic from 2nd Novice winners Chelsea Funk and Renee Loreen

Cascade Sports Car Club's 60th
Mountains to the Sea Rally

BEACH TRIP!

May 10, 2025

Rallymasters: Monte and Victoria Saager



| Car # | Team | Class | Vehicle | Score |
|--------------------------------------|---|-------|---|-------|
| Equipped: (GPS and Unlimited) | | | | |
| 6 | Sheldon Coles / Yulia Smolyansky | UNL | 1974 Alfa Romeo GTV (Red) | 13 |
| 5 | Paul Eklund / RDale Kraushaar | UNL | 2017 Subaru Outback (Gray) | 43 |
| 20 | Bob Morseburg / Cheri Eddy | UNL | 2007 Honda Civic (Bronze) | 88 |
| 14 | Robert Paxman / Kathy Sacry | GPS | 2004 Nissan SpecV (Silver and blac) | 274 |
| 17 | Frank McKinnon / John Putnam | UNL | 2018 Ford EcoSport () | 421 |
| SOP: (stock) | | | | |
| 1 | David Gattman / JoAnn Gattman | SOP | 2021 Subaru Crosstrek (White) | 173 |
| 2 | Marcus Gattman / Kerrie Gattman | SOP | 2018 Subaru WRX (Blue) | 221 |
| 4 | Alex Castaneda / Eric Hanson | SOP | 2022 Chevrolet Bolt EUV (dark grey) | 228 |
| 10 | Andrew Brewer / Kat Iverson | SOP | 2018 Cadillac ATS 3.6 AWD (Satin Steel) | 368 |
| 13 | Torm Kelsey-Green / Kasey Klaus | SOP | 2006 Dodge Magnum (Slate Green) | 372 |
| 24 | Rob Elkin / John Elkin | SOP | 2019 Hyundai Kona (White) | 471 |
| 8 | John Sattenspiel / Bryn Griffiths-Sattenspiel | SOP | 1980 Triumph TR8 (Midas Gold) | DNF |
| 3 | Bill Ferber / Kelly Ferber | SOP | 2013 Fiat 500 Pop (Mental Green) | DNS |
| 7 | Lee Nielsen / Marc Nielsen | SOP | 2000 Audi TT (Silver) | DNS |
| 11 | Bill Kayser / Bjorn Freeman-Benson | SOP | 2024 Audi RS5 (Black) | DNS |
| 16 | edmund frank / eustacia (jo) su | SOP | 2019 Porsche Macan (Blue) | DNS |
| Novice: (stock) | | | | |
| 12 | Steven Tellman / Courtney Tellman | NOV | 2025 BMW () | 525 |
| 9 | Renee Loreen / Chelsea Funk | NOV | 2018 Chevrolet Tahoe (Tan) | 651 |
| 19 | Bill Kaplan / Judy Kraut | NOV | 2017 Porsche Macan GTS (Red) | 841 |
| 22 | Marilyn Baumer / Wes Cowan | NOV | 2020 Mazda Mazda3 Turbo (Red) | 856 |
| 21 | Oszkar Rohosy / Jade Nguyen | NOV | 2013 Scion FR-S () | 936 |
| 23 | Stefan Kaplan / Rayann Box | NOV | 2024 Subaru Outback (Blue) | 1220 |
| 15 | Travis Cothren / Billy Cundiff | NOV | 2000 Subaru Impreza wagon (Blue) | DNS |

DNF = Did not finish DNS = Did not start



Enjoy a fun drive in the country. Play the game that takes you places.

www.cascadegeargrinders.org

rally@cascadesportscarclub.org

#CSCC Road Rally

as of 5/10/2025 7:54 PM

2025 CSCC Mountains to the Sea Rally - Leg Scores

| Car # Team | | Class | 4 | 5 | 6 | 7 | 8 | 9 | 10 | 12 | 13 | 14 | 15 | 16 | 17 | 18 | 19 | 21 | 22 | 23 | 25 | 26 | 27 | 28 | 29 | 31 | 32 | 33 | 34 | 35 | 36 | 37 | 38 | 39 | 40 | 42 | Total |
|------------|---|-------|----|----|----|----|----|----|----|----|----|----|----|----|----|----|----|----|----|----|----|----|----|----|----|----|----|----|----|----|----|----|----|----|----|----|-------|
| 6 | Sheldon Coles / Yulia Smolyansky | UNL | 0 | 0 | 0 | 0 | 0 | 0 | 1 | 1 | 0 | 0 | 1 | 1 | 0 | 0 | 1 | 1 | 0 | 0 | 1 | 0 | 0 | 0 | 0 | 2 | 1 | 1 | 0 | 0 | 0 | 1 | 0 | 1 | 0 | 0 | 13 |
| 5 | Paul Eklund / RDale Kraushaar | UNL | 0 | 0 | 0 | 0 | 3 | 22 | 0 | 0 | 0 | 1 | 1 | 0 | 1 | 4 | 4 | 0 | 0 | 0 | 2 | 2 | 0 | 1 | 0 | 1 | 0 | 0 | 0 | 0 | 1 | 0 | 0 | 0 | 0 | 0 | 43 |
| 20 | Bob Morseburg / Cheri Eddy | UNL | 0 | 0 | 0 | 1 | 0 | 0 | 0 | 0 | 9 | 0 | 0 | 0 | 10 | 1 | 0 | 0 | 0 | 0 | 60 | 2 | 0 | 0 | 0 | 2 | 1 | 1 | 0 | 0 | 0 | 0 | 0 | 0 | 1 | 0 | 88 |
| 1 | David Gattman / JoAnn Gattman | SOP | 24 | 1 | 0 | 17 | 25 | 7 | 5 | 1 | 19 | 3 | 0 | 3 | 7 | 8 | 7 | 0 | 0 | 5 | 14 | 12 | 5 | 0 | 1 | 0 | 0 | 0 | 6 | 5 | 9 | 5 | 3 | 4 | 1 | 0 | 173 |
| 2 | Marcus Gattman / Kerrie Gattman | SOP | 34 | 36 | 15 | 13 | 5 | 6 | 29 | 22 | 3 | 7 | 1 | 5 | 8 | 18 | 5 | 1 | 0 | 2 | 1 | 0 | 2 | 2 | 2 | 0 | 2 | 4 | 3 | 3 | 7 | 1 | 15 | 2 | 1 | 0 | 221 |
| 4 | Alex Castaneda / Eric Hanson | SOP | 60 | 39 | 14 | 9 | 10 | 10 | 11 | 10 | 3 | 12 | 3 | 10 | 10 | 17 | 18 | 1 | 3 | 4 | 5 | 0 | 3 | 3 | 2 | 0 | 1 | 0 | 3 | 12 | 1 | 2 | 12 | 0 | 0 | 0 | 228 |
| 14 | Robert Paxman / Kathy Sacry | GPS | 15 | 10 | 32 | 13 | 18 | 34 | 8 | 3 | 1 | 9 | 4 | 6 | 15 | 17 | 0 | 1 | 0 | 1 | 4 | 9 | 5 | 1 | 9 | 4 | 0 | 2 | 5 | 25 | 9 | 0 | 14 | 8 | 7 | 0 | 274 |
| 10 | Andrew Brewer / Kat Iverson | SOP | 6 | 19 | 34 | 5 | 31 | 1 | 0 | 32 | 5 | 22 | 5 | 2 | 3 | 31 | 7 | 3 | 5 | 2 | 25 | 19 | 3 | 6 | 4 | 17 | 22 | 12 | 16 | 5 | 13 | 0 | 3 | 16 | 0 | 0 | 368 |
| 13 | Torm Kelsey-Green / Kasey Klaus | SOP | 35 | 10 | 28 | 4 | 32 | 10 | 12 | 16 | 19 | 26 | 6 | 31 | 1 | 32 | 17 | 5 | 3 | 12 | 37 | 5 | 1 | 0 | 11 | 0 | 5 | 3 | 7 | 6 | 11 | 9 | 9 | 4 | 0 | 0 | 372 |
| 17 | Frank McKinnon / John Putnam | UNL | 35 | 18 | 9 | 3 | 10 | 15 | 1 | 3 | 1 | 17 | 5 | 6 | 5 | 17 | 28 | 6 | 2 | 4 | 60 | 58 | 36 | 27 | 27 | 0 | 1 | 1 | 0 | 1 | 1 | 0 | 26 | 16 | 17 | 0 | 421 |
| 24 | Rob Elkin / John Elkin | SOP | 60 | 14 | 1 | 40 | 40 | 21 | 4 | 12 | 10 | 30 | 26 | 5 | 15 | 44 | 14 | 12 | 17 | 12 | 24 | 37 | 23 | 4 | 1 | 14 | 12 | 6 | 4 | 2 | 22 | 2 | 0 | 0 | 3 | 0 | 471 |
| 12 | Steven Tellman / Courtney Tellman | NOV | 60 | 18 | 18 | 45 | 50 | 8 | 25 | 60 | 20 | 37 | 8 | 28 | 0 | 19 | 25 | 10 | 6 | 9 | 7 | 9 | 21 | 4 | 4 | 15 | 13 | 5 | 13 | 2 | 25 | 10 | 10 | 0 | 1 | 0 | 525 |
| 9 | Renee Loreen / Chelsea Funk | NOV | 11 | 21 | 2 | 40 | 36 | 39 | 33 | 60 | 60 | 19 | 0 | 26 | 21 | 22 | 5 | 22 | 12 | 14 | 19 | 5 | 0 | 9 | 6 | 16 | 21 | 6 | 34 | 39 | 34 | 4 | 13 | 10 | 3 | 0 | 651 |
| 19 | Bill Kaplan / Judy Kraut | NOV | 60 | 28 | 7 | 57 | 46 | 6 | 8 | 60 | 19 | 60 | 60 | 60 | 22 | 60 | 42 | 4 | 13 | 11 | 60 | 13 | 4 | 21 | 60 | 60 | 8 | 0 | 22 | 1 | 22 | 6 | 0 | 0 | 1 | 0 | 841 |
| 22 | Marilyn Baumer / Wes Cowan | NOV | 60 | 26 | 31 | 36 | 41 | 14 | 60 | 60 | 60 | 31 | 4 | 17 | 17 | 60 | 50 | 60 | 9 | 5 | 60 | 2 | 20 | 0 | 58 | 28 | 5 | 1 | 18 | 20 | 11 | 1 | 30 | 16 | 5 | 0 | 856 |
| 21 | Oszkar Rohosy / Jade Nguyen | NOV | 26 | 26 | 36 | 1 | 41 | 14 | 60 | 22 | 60 | 33 | 3 | 23 | 29 | 33 | 0 | 60 | 60 | 12 | 60 | 60 | 41 | 8 | 21 | 60 | 60 | 2 | 24 | 16 | 20 | 4 | 5 | 33 | 9 | 0 | 936 |
| 23 | Stefan Kaplan / Rayann Box | NOV | 60 | 49 | 7 | 40 | 50 | 59 | 22 | 60 | 60 | 9 | 37 | 60 | 60 | 60 | 25 | 60 | 35 | 38 | 46 | 50 | 11 | 9 | 26 | 47 | 41 | 24 | 27 | 25 | 29 | 6 | 60 | 60 | 28 | 0 | 1220 |
| 8 | John Sattenspiel / Bryn Griffiths-Sattenspiel | SOP | | | | | | | | | | | | | | | | | | | | | | | | | | | | | | | | | | | DNF |
| 3 | Bill Ferber / Kelly Ferber | SOP | | | | | | | | | | | | | | | | | | | | | | | | | | | | | | | | | | | DNS |
| 7 | Lee Nielsen / Marc Nielsen | SOP | | | | | | | | | | | | | | | | | | | | | | | | | | | | | | | | | | | DNS |
| 11 | Bill Kayser / Bjorn Freeman-Benson | SOP | | | | | | | | | | | | | | | | | | | | | | | | | | | | | | | | | | | DNS |
| 15 | Travis Cothren / Billy Cundiff | NOV | | | | | | | | | | | | | | | | | | | | | | | | | | | | | | | | | | | DNS |
| 16 | edmund frank / eustacia (jo) su | SOP | | | | | | | | | | | | | | | | | | | | | | | | | | | | | | | | | | | DNS |

DNF = Did not finish DNS = Did not start



CASCADE GEARGRINDERS

2025 Road Rally Schedule

as of 1/6/25

Register: MotorsportReg.com

Cascade Sports Car Club's Road Rally Program (aka Cascade Geargrinders) organizes time-speed-distance road rallies in and around Portland, Oregon.

What is TSD road rally? A scenic drive on country roads. A game that takes you places.
A fun autosport competition for beginners and experienced rally teams.

Saturday Road Rally Series

- Feb. 8** **Rally School** – Start the season with a virtual review of time-speed-distance road rally rules and procedures on Friday evening. Then run a practice road rally on Saturday morning to test your driving skills and navigational knowledge.
- March 1** **Saturday Series** rallies are beginner friendly TSD road rallies, starting and ending in the Portland area. Rallies take three to four hours to complete. First car starts at 10:01 a.m.
- April 19**
- June 7**
- July 19** Entry fee: \$25 per car for CSCC members, \$35 per car for non-members
- August 2** **Save with a Series Pass.** \$150. Includes entry in Rally School and all 6 Saturday Series rallies. Register just once to enter all 7 events. Run the same car number with the same start time each rally. Available to CSCC members only. CSCC membership is [available online](#).
- Sept. 27**



Play the game that takes you places

Special Events

- May 10** **Mountains to the Sea** – 60th anniversary of Cascade's classic rally. Full-day tour-style time-speed-distance road rally, offering a scenic route that is fun to drive, starting in Portland and ending at the Pacific Ocean (this year, Newport area).
Entry fee: \$60 per car for CSCC members, \$85 per car for non-members
- Oct. 25** **Ghouls Gambol** – This daytime Halloween-themed rally explores autumn colors around Portland's foothills. Optional decorated car show. Caution: May include tricks and treats.
Entry fee: \$25 per car for CSCC members, \$35 per car for non-members

Save more with a Season Ticket. \$210 for 9-event Season Ticket. Includes all benefits and events in the Series Pass, plus entry in Mountains to the Sea and Ghouls Gambol. Available to members only. CSCC membership is [available online](#).

For all 2025 Cascade Geargrinders road rallies:

- Online registration is required: MotorsportReg.com.
- Entry requires a street-legal vehicle, a licensed insured driver, a navigator, and a smart device (e.g., cell phone or tablet) running the [Competitor Richta GPS Checkpoints app](#) (app is free).
- Rallies are conducted in accordance with the current [Road Rally Rules](#).



Enjoy a fun drive in the country. Play the game that takes you places.