

# Geargrinders News

March 2025



## March 1 Saturday Series Rally

The Cascade Geargrinders Saturday Rally Series offers beginner-friendly time-speed-distance road rallies, lasting three to four hours, starting and ending in the Portland area. Teams who run three or more of the six Saturday Series rallies are eligible for Series Awards. The March 1 rally is the first in the 2025 Saturday Rally Series.

Entry requires a street-legal vehicle, licensed and insured driver, navigator, and a smart device (cell phone or tablet) running the Competitor Richta GPS Checkpoints app. The app is free.

Rallymasters David and JoAnn Gattman will take us on a scenic tour from Milwaukie Lowe's to Mt. Angel.



The rally title, **Celebration Day**, honors JoAnn's Feb. 29 birthday which she celebrates on March 1.

This three-hour tour-style road rally includes a break at the Historic Butteville Store. Don't miss it!

### Schedule

Feb. 28, Friday  
Zoom Rally Q&A meeting 7 pm

March 1, Saturday  
First team starts 10:01 am  
First team finishes approx. 1 pm  
Prizes awarded soon after all teams finish

### Registration

Entry fee is \$25 per team for CSCC members, \$35 per team for non-members.

Register by **midnight Feb. 26**:

<http://msreg.com/CSCC25MarchRally>

Rally Series Pass and Season Ticket holders register just once and run the same car number with the same start time at each rally. Cascade membership is required for a Series Pass and for a Season Ticket. Membership is [available online](#). Rally Series Pass and Season Tickets are available **through Feb. 26**.

**Series Pass** –\$150. Entry in Rally School and all six Saturday Series rallies.

<http://msreg.com/SeriesPass25>

**Season Ticket** – \$210. Entry in all nine events including Mountains to the Sea and Ghouls Gambol.

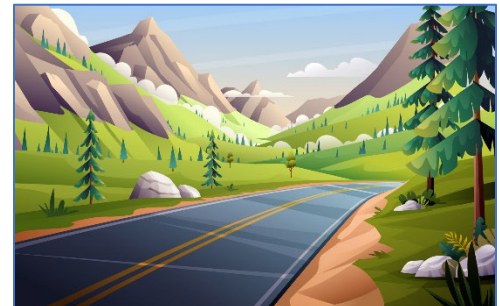
<http://msreg.com/SeasonTicket25>

For updates: <https://www.cascadegeargrinders.org>

## Save the Date – May 10 – 60th Anniversary Mountains to the Sea Rally

Cascade's classic rally, Mountains to the Sea, returns to the Newport area on May 10. Rallymasters Monte and Victoria Saager developed a scenic route that showcases some of the best rally roads from the Willamette Valley to Yaquina Bay. Beautiful scenery, fun-to-drive rally roads.

Mountains to the Sea is an all-day time-speed-distance tour-style road rally that explores less traveled roads. The rally route is easy to follow. Mileage is provided for route directing instructions. Speeds are set at or below legal speed limits. Pauses are given where delays may occur. There are no uninstructed turns, and no navigational or time-keeping traps.



Registration opens soon. Make plans today for May 10 – Mountains to the Sea Rally.

## Feb. 7-8 Rally School

Twenty-five teams entered Cascade Sports Car Club's Feb. 7-8 Rally School. The Friday-evening virtual rally school was followed by a just-for-practice road rally on Saturday.

Rallymasters Monte and Victoria Saager developed the rally – **Think You Know How to Rally?** – to teach attendees how to play the game of road rally. This was a lightly trapped rally, meaning it included some simple rally challenges. The rally route was under 100 miles from the start in northwest Portland to the ending location at Fultano's in Scappoose, and it took about three and a half hours to complete the event. There was a mid-rally break at the Yankton Store/Restaurant.

Due to a wintry weather forecast and uncertain rally road conditions at higher elevations, rally teams were given two weeks to run the practice rally. Ten teams ran it on the scheduled date, with just a couple notable reports. Skyline Road was slippery at the top of Rocky Point. And there were goats in the road on Pisgah Home.

Results will be published after all teams complete the event.



In addition to the teams that entered the rally, several folks from the Sacramento Valley Region Porsche Club of America sat in on our virtual Rally School meeting Friday evening. According to the Vice President of the Sacramento club, "Our rally group is working to improve and grow our rally program, and everyone is impressed with what you do! We want to see how you do it."

Play the game that takes you places. For more information: <https://www.cascadegeargrinders.org/>

## More Pacific Northwest Rally News

Want more TSD rally? The [Northwest Rally Council](#) (NWRC) has announced their 2025 rally schedule. They plan to offer six Friday Nighters: April 11, May 9, June 13, July 11, Sept. 12 and Oct. 10. The start location is Eastgate

Park and Ride in Bellevue, WA. Registration opens at 6:45 pm with a drivers meeting at 7:15 pm. First car starts at 7:31 pm. NWRC's Friday Nighter Series offers Novice and SOP championships.

Also on NWRC's 2025 schedule are [Rainier's touring rallies](#): Raindrop on May 4, Nor'wester on Aug. 15-17, and Alcan 5000 Sept. 2-12.

Closer to home is the [Alfa Romeo Owners of Oregon](#) (AROO) Rally Cup Series. They offer a four-event series of Sunday morning TSD rallies, starting from the French Prairie Rest

### RAINIER AUTO SPORTS CLUB

*"the best back roads in the northwest"*



**50 years of Rally, and only Rally**

**join us -- all year 'round**

Alcan Winter Rally -- 10-day adventure to Alaska  
Raindrop Rally -- an all paved Spring Sunday drive  
No Alibi Rally -- 2-day tour of gravel back roads  
Alcan 5000 Rally -- Autumn to Alaska -- this time with motorcycles too  
Nor'Wester Auto Rally -- multi-state late Summer smooth gravel tour

follow all our events at [www.rainierautosports.com](http://www.rainierautosports.com) and on [facebook](#)

Area (on I-5 south of Tigard), on March 8, April 6, May 4 and June 1. The drivers meeting is at 9:45 am with first car out at 10:01 am. [Preregistration](#) is required for all AROO events.

For current schedule updates, check each club's website.



# CASCADE GEARGRINDERS

## 2025 Road Rally Schedule

as of 1/6/25

Register: [MotorsportReg.com](https://MotorsportReg.com)

Cascade Sports Car Club's Road Rally Program (aka Cascade Geargrinders) organizes time-speed-distance road rallies in and around Portland, Oregon.

**What is TSD road rally?** A scenic drive on country roads. A game that takes you places.  
A fun autosport competition for beginners and experienced rally teams.

### Saturday Road Rally Series

- Feb. 8** **Rally School** – Start the season with a virtual review of time-speed-distance road rally rules and procedures on Friday evening. Then run a practice road rally on Saturday morning to test your driving skills and navigational knowledge.
- March 1**  
**April 19**  
**June 7**  
**July 19**  
**August 2**  
**Sept. 27**
- Saturday Series** rallies are beginner friendly TSD road rallies, starting and ending in the Portland area. Rallies take three to four hours to complete. First car starts at 10:01 a.m.
- Entry fee: \$25 per car for CSCC members, \$35 per car for non-members
- Save with a Series Pass.** \$150. Includes entry in Rally School and all 6 Saturday Series rallies. Register just once to enter all 7 events. Run the same car number with the same start time each rally. Available to CSCC members only. CSCC membership is [available online](#).



*Play the game that takes you places*

### Special Events

- May 10** **Mountains to the Sea** – 60th anniversary of Cascade's classic rally. Full-day tour-style time-speed-distance road rally, offering a scenic route that is fun to drive, starting in Portland and ending at the Pacific Ocean (this year, Newport area).  
Entry fee: \$60 per car for CSCC members, \$85 per car for non-members
- Oct. 25** **Ghouls Gambol** – This daytime Halloween-themed rally explores autumn colors around Portland's foothills. Optional decorated car show. Caution: May include tricks and treats.  
Entry fee: \$25 per car for CSCC members, \$35 per car for non-members

**Save more with a Season Ticket.** \$210 for 9-event Season Ticket. Includes all benefits and events in the Series Pass, plus entry in Mountains to the Sea and Ghouls Gambol. Available to members only. CSCC membership is [available online](#).

#### For all 2025 Cascade Geargrinders road rallies:

- Online registration is required: [MotorsportReg.com](https://MotorsportReg.com).
- Entry requires a street-legal vehicle, a licensed insured driver, a navigator, and a smart device (e.g., cell phone or tablet) running the [Competitor Richta GPS Checkpoints app](#) (app is free).
- Rallies are conducted in accordance with the current [Road Rally Rules](#).



*Enjoy a fun drive in the country. Play the game that takes you places.*