

Geargrinders News

April 2023



April 15 Saturday Series Rally

Rallymasters David and JoAnn Gattman bring a delightful romp titled "Achilles Last Stand" for the April 15 Saturday Series Rally.



Teams will start at Milwaukie Lowes and travel north into Clark and Skamania counties on some of the finest rally roads in the area. The event is about 100 miles, takes under four hours to complete, and ends in Vancouver.

The April rally is the second of six in the Series. Teams who run three or more of the six rallies are eligible for Series Awards.

The Saturday Series offers beginner-friendly time-speed-distance road rallies, starting and ending in the Portland area, beginning at 10 a.m. on a Saturday morning, lasting from three to four hours.

Entry requires a street-legal vehicle, licensed and insured driver, navigator, and a smart device (cell phone or tablet) running the Competitor Richta GPS Checkpoints app (app is free).

Entry fee is \$20 per car for CSCC members, \$30 per car for non-members.

Registration is open through midnight **April 12**: <http://msreg.com/CSCCApril23>

March 18 Saturday Series Rally

The weather was perfect for a rally – blue sky, temps in the 60s. Beautiful! Twenty-four teams entered the March 18 Saturday Series Rally. Four pre-paid entries sat this one out, and two registered entries canceled just before the rally started. So eighteen teams charged out of the starting gate. Before the odometer check section ended, one team headed home. Seventeen teams finished the course.

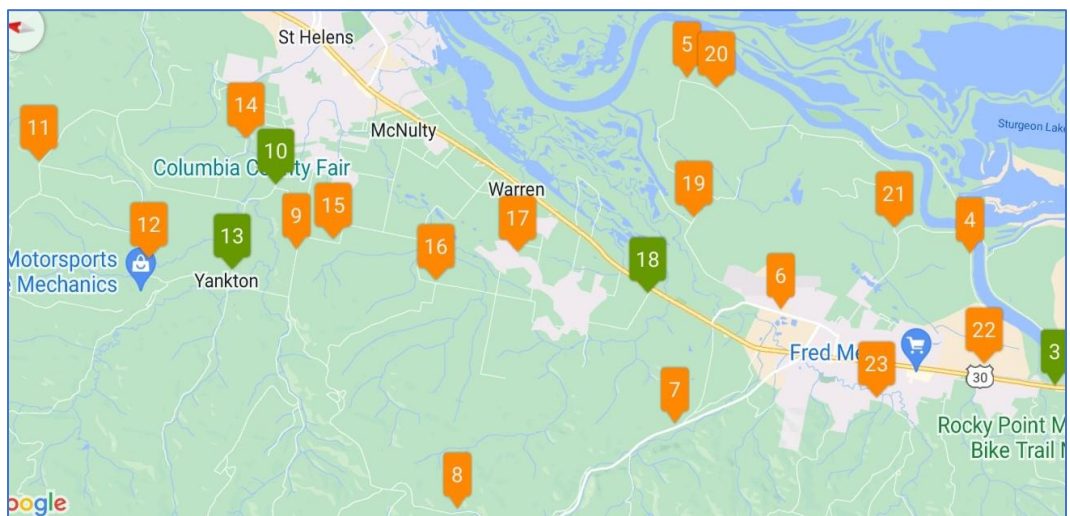
About the rally

The rally was about 90 miles from the start in northwest Portland to the ending location in Scappoose, and it took about three and a half hours to complete.

The route traveled along Hwy 30, then climbed up Logie Trail to Skyline and

down Rocky Point Road back to Hwy 30. Then out around the Scappoose Dike, up into the foothills of the Coast Range to Yankton for a break at the Yankton Store and Restaurant.

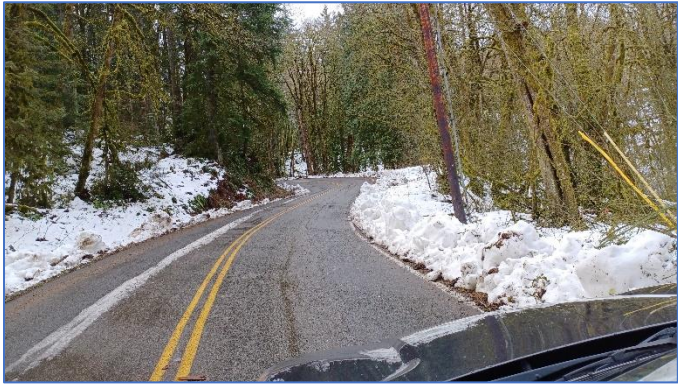
After the break, the course wound through Warren and around the Scappoose Dike the other way, ending at Fultano's Pizza in Scappoose. The clear weather afforded some spectacular views.



Orange markers are GPS checkpoints. Green markers are restart locations.

What the rallymasters said

Just about the time we were finishing course development and starting to measure, calculate and test drive our event, it snowed. And snowed. A lot at higher elevations. For a few days, we were homebound, snowed in.



When we finally did venture forth, we skipped the high spots on our route, knowing that we weren't equipped for driving in the snow. When we did get on those roads, we found snow piled deep along the roadsides, but road surfaces were mostly clear except in a couple of the very highest locations. With expected temperatures in the 60s, we knew the rally roads would be clear by rally day.

Most of the roads on the March rally route have been rally roads before, but we strung them together a little differently this time. We did use one road new to

us – Hankins Road – which connected west St. Helens to the Yankton area. And we used the Scappoose dike roads in both directions, first at the beginning of the rally and then again at the end.

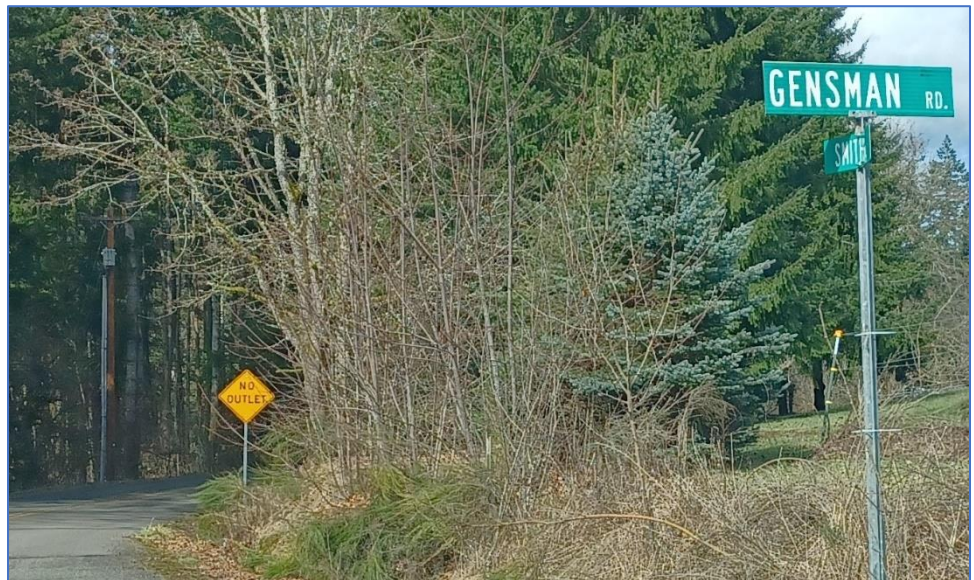
Fourteen of the 17 scored legs were tour-like with no intended deception. There were three simple challenges.

The first challenge involved a forced turn in Leg 12. Two teams navigated this challenge correctly, one of whom zeroed the leg. For all others, it was a very costly max.

You are traveling on Smith Road looking for this instruction: L at “GENSMAN” (go left at a sign reading Gensman). You encounter a sign that identifies a sideroad on the left as Gensman. The road straight ahead is signed no outlet.

Since a road marked no outlet is not a valid rally road, there is no intersection here. Since you must be at an intersection to take the action L, you cannot execute the instruction L at “GENSMAN” here.

You are forced left here (it's the only way you can go) and you continue looking for a place to execute the instruction L at “GENSMAN”.




And of course there is another sign reading Gensman a short way down the road at an intersection identifying a sideroad to the left as Dart Creek. This is where you execute the instruction L at “GENSMAN”. So you take Dart Creek, wind around a loop that takes you full circle, where this time you go straight at the Dart Creek sideroad and continue on.

Those who took the shortcut (used the instruction at the no outlet) reached Checkpoint 12 about 8 minutes early. As some consolation, they got an extra 8 minutes at the break at the Yankton Store.

Geargrinders News (continued)

The second challenge was in Leg 17. A route instruction directed you to CAST 35 for 1 minute then CAST 25. The next route instruction was L on CASCADE VIEW. Cascade View is a loop with two roads with the same name entering the neighborhood. If you accurately averaged 35 mph for 1 minute, you would drive past the first Cascade View entrance and go left on the second one. If you weren't so accurate, you would take the first entrance. In either case, teams going around this loop in either direction went past Checkpoint 17. However, those who took the first entrance reached the checkpoint early, earning penalty points. Most SOP teams and a couple Novices got this one right.



The last challenge was a note inviting you to PAUSE 20 seconds at “” (sign with a deer on it). This note was in effect the last 14 miles of the rally. You had to continue to execute the NRIs while keeping an eye out for this deer sign.

Just before the miles ran out, a deer sign appeared along the rally route. Unfortunately, the sign you were looking for had one deer while the sign along the route had two deer. The note and its pause were never used. Those who paused at that wrong sign earned penalty points on Leg 23.

What ralliers said

Nice baby deer. Reminds me of ducklings. [You had to be there.]

Thanks for a great event!

Was a fun day, thanks for the route!

Thanks for holding the exciting event.

Great job as always!

Exchange with a rally team, after no app controls were being reported from this team:

Team: Do you have us now? We were signed in to the April rally. We're in the March rally now.

Us: Oh, that's what happened. How were your scores in April?

Team: Nonexistent.

Congratulate the top finishers

First overall and first in the Unlimited class is the team of Bob Morseburg and Cheri Eddy in Car #30 with a score of 11 over 17 scored legs. Wow! Second overall and first in the SOP class is the team of Ryan Rink and Simon Levear in Car #14 with a score of 91. The top two finishers were the only teams to correctly navigate the “Gensman” trap in Leg 12.



JoAnn and David Gattman

In third place overall and second SOP is the team of Cody and Sabrina Garvin in Car #6 with a score of 120. The David and JoAnn Gattman team followed closely with a score of 126 to finish third SOP.

First-time ralliers Perla Zhu and Jacky Jing in Car #23 finished in first place in the Novice Class. Second Novice is the team of Hallie and Joseph Edge in Car #11. Steve Gieske and David Finch in Car #22 finished third Novice.

Congratulations to all!

Cascade Sports Car Club's

Saturday Rally Series

The Rides of March

March 18, 2023

Rallymasters: Monte and Victoria Saager



Car #	Team	Class	Vehicle	Score
Equipped: (GPS and Unlimited)				
30	Robert Morseburg / Cheri Eddy	UNL	2007 Honda Civic (Bronze)	11
8	Robert Paxman / Chris Lane	GPS	2004 Nissan SpecV (Silver)	238
SOP: (stock)				
14	Ryan Rink / Simon Levear	SOP	2018 Tesla Model 3 (Blue)	91
6	Cody Garvin / Sabrina Garvin	SOP	2017 Volkswagen Golf R (Black)	120
1	David Gattman / JoAnn Gattman	SOP	2021 Subaru Crosstrek (White)	126
2	Dave Sacry / Kathy Sacry	SOP	2023 Mazda CX-5 (Soul Red)	135
19	Andy Lilienthal / Mercedes Lilienthal	SOP	2022 Subaru Crosstrek (White)	155
7	Lee Nielsen / Chuck Winkler	SOP	2000 Audi TT (Silver)	162
12	Russ Sherrell / Kate Sherrell	SOP	2003 Porsche 911 (Black)	163
4	Bill Ferber / Kelly Ferber	SOP	2013 Fiat 500 Pop (Mental Green)	209
13	Torm Kelsey-Green / Kasey Klaus	SOP	2007 Dodge Caliber (Red)	220
17	Dan Bolan / Pat Bolan	SOP	2022 Subaru Forester (Black)	285
16	Eli Kloft / Luke Healey	SOP	2023 Chevrolet Bolt EV (Grey)	364
20	John Johnson / Maria Menor	SOP	1985 Porsche 911Targa (Meteor Metallic)	DNF
3	Angelique Ortega / Kevin Ortega	SOP	2013 Hyundai Sonata (Grey)	DNS
5	Madelyn Tabor / Mark Tabor	SOP	2014 Subaru Crosstrek (Dark gray)	DNS
9	Brian Anderson / Jamie Anderson	SOP	2020 Mazda CX5 (Red)	DNS
10	Andrew Brewer / Linda Blackburn	SOP	2018 Cadillac ATS 3.6 AWD (satin steel)	DNS
Novice: (stock)				
23	Perla Zhu / Jacky Jing	NOV	2022 Subaru BRZ (White)	245
11	Hallie Edge / Joseph Edge	NOV	2002 Subaru Impreza WRX (Silver)	262
22	Cassie Lloyd / Jacob Lloyd	NOV	2017 Toyota Yaris iA (Dark Blue)	366
15	Steve Gieske / David Finch	NOV	2021 Kia K5 (Gold)	422
18	Gerry Seaver / Greg Seaver	NOV	1991 Volkswagen Jetta GLI (Black)	Cancel
21	Jonathan Decker / Tammy Decker	NOV	1974 Porsche 911 (Green)	Cancel

DNF=Did not finish DNS=Did not start

[March Rally results with leg scores](#)

Enjoy a fun drive in the country. Play the game that takes you places.

www.cascadegeargrinders.org

rally@cascadesportscarclub.org

[f #CSCC Road Rally](#)



CASCADE SPORTS CAR CLUB GEARGRINDERS

2023 Road Rally Schedule

Register: MotorsportReg.com

as of 11/22/22

Saturday Road Rally Series

February 18 – Rally School – Start the season with a virtual review of time-speed-distance road rally rules and procedures on Friday evening. Then run a practice road rally on Saturday morning to test your driving skills and navigational knowledge.

March 18

Saturday Series rallies are beginner friendly TSD road rallies, starting and ending in the Portland area. Rallies take three to four hours to complete. First car starts at 10:01 a.m.

April 15

May 13

June 10

July 22

August 19

Entry fee: \$20 per car for CSCC members, \$30 per car for non-members

Save with a Series Pass. \$120. Includes entry in Rally School and all 6 Saturday Series rallies. Register just once to enter all 7 events. Run the same car number with the same start time each rally. Available to CSCC members only. CSCC membership is [available online](#).



Special Events

September 9 – Mountains to the Sea – 58th anniversary of Cascade's classic rally. Full-day tour-style time-speed-distance road rally, offering a scenic route that is fun to drive, starting in Portland and ending at the Pacific Ocean (perhaps Newport). Entry fee: \$50 per car for CSCC members, \$75 per car for non-members

October 28 – Ghouls Gambol – This daytime rally explores autumn colors around Portland's foothills and farmland. Optional decorated car show. Caution: May include tricks and treats. Ends at Spirit of Halloweentown in St. Helens. Entry fee: \$20 per car for CSCC members, \$30 per car for non-members

Save more with a Season Ticket. \$180 for 9-event Season Ticket. Includes all benefits and events in the Series Pass, plus entry in Mountains to the Sea and Ghouls Gambol. Available to members only. CSCC membership is [available online](#).

November 18 – Oregon Trailblazer – This year we welcome the return of an occasional Cascade tradition – a tricky TSD rally that challenges your team's driving and navigational skills. Expect tricks and traps. (The last Oregon Trailblazer Rally was in 2006.) Entry fee: \$20 per car for CSCC members, \$30 per car for non-members

For all 2023 Cascade Geargrinders road rallies:

- Online registration is required: MotorsportReg.com.
- Entry requires a street-legal vehicle, a licensed insured driver, a navigator, and a smart device (e.g., cell phone or tablet) running the [Competitor Richta GPS Checkpoints app](#) (app is free).
- Rallies are conducted in accordance with the current [Road Rally Rules](#).
- Events will comply with the [Cascade Geargrinders Coronavirus Message](#).



Enjoy a fun drive in the country. Play the game that takes you places.

www.cascadegeargrinders.org

rally@cascadesportscarclub.org

[f](#) #CSCC Road Rally